



# Rusk County 4-H Clover Files



August 2018



## Rusk County 4-H

### FULL ARMOR 4-H CLUB

Micah Pettit

658-4255

Second Tuesday, 7:00 p.m.

Full Armor Lunch Room

### LEVERETT'S CHAPEL 4-H CLUB

Randy Tidwell

570-4377

rtidwell@leverettschapelisd.net

2nd Monday, 6:00 p.m.

Leverett's Chapel Ag Building

### LIVESTOCK 4-H CLUB

Chris Jones

2165368

Michelle Pace

646-2454

3rd Monday, 6:00 p.m.

Extension Meeting Room

### ROUND-UP 4-H CLUB

Carey Murphy

880-8148

3rd Sunday, 2:00 p.m.

Pirtle Methodist Church-Overton

### TATUM 4-H CLUB

Katrina McKee

720-6711

3rd Monday, 6:30 p.m.

Tatum I.S.D. Community Room

Website: [rusk.agrilife.org/](http://rusk.agrilife.org/)

# dates to remember

## 4-H ADULT LEADER'S MEETINGS



*Upcoming meeting  
date*

*To-Be-Announced*



**Patriot  
Day  
09/11**

## Rusk County Youth Project Show

**February 26 - March 2, 2019**

RUSK COUNTY  
**YOUTH PROJECT SHOW**



Like their **facebook** page  
for all the latest RCYPS news!

**2018 SYRUP FESTIVAL  
& HAY SHUTTLE  
SATURDAY, 11/10/18**

## MAJOR SHOW TAG ORDERS

**DUE AUGUST 29**

**>>> Heifer UIN's**

**>>> Lambs and Goats \$15 each**

**Entry Forms due to Extension Office**

**by August 21:**

**>>> Four States**

**>>> State Fair**

**>>> Heart of Texas**

**>>> East Texas State Fair**



September 22, 2018

*Extension Office closed on  
Monday, September 3*

**LABOR DAY**





Welcome to the largest youth organization in Texas! Texas has more than 550,000 youth who are involved in 4-H experiences each year and we are pleased that you have decided to join 4-H! If you are new to 4-H, here is some information about our enrollment process and how we need your partnership in getting your membership entered and active!

**4-H ENROLLMENT:** Each year on August 14th all membership in Texas 4-H goes to inactive and all youth and adult volunteers must re-enroll. Youth members are required to pay a \$20.00 participation fee if enrolled by October 31st, and a \$25.00 fee from November 1st to the completion of the 4-H year. Adults pay a \$10.00 volunteer applicant fee. Adults and youth will need to enroll on 4HConnect and be active to be considered an official member of Texas 4-H. An active enrollment is required in order to register and participate in all 4-H activities and events.

Enrollment payment methods, procedures and additional fees may vary in each county, so check with your local county Texas A&M AgriLife Extension Service office for more information ([counties.agrilife.org](http://counties.agrilife.org)). When you are enrolling in 4-H and you arrive at the invoice/payment screen, you will be able to add your credit card information into the system or select the club/county (no personal checks allowed) check payment option. If the club/county check option is visible, please make sure you are allowed to use it. Some counties require all enrollment to be paid by credit card. If you are allowed to use the club/county check option you are responsible for writing a check to your club/county 4-H Program which in return will send a club/county check to the Texas 4-H Youth Program. *Once a payment method has been selected and enrollment submitted the payment type cannot be changed.*

## 4HCONNECT is...

- The official Texas 4-H Youth Development Program database for enrolled 4-H members and volunteers.
- A secured database that is in compliance with the PCI Security Standards Council. The Texas 4-H Youth Development Program and the 4HOnline company work closely to monitor and ensure the highest level of protection for information stored on the system. Texas 4-H, nor 4HOnline, does not share or sell any personal information to third party vendors without your knowledge or permission.
- Based on "zero-based enrollment." This means that each year at the start of the enrollment cycle membership in Texas 4-H goes to zero and everyone must re-enroll. This process is based on federal accounting policies.
- A partnership between the 4-H family and the county Extension Office. We encourage all 4-H families to become familiar with 4-H CONNECT in order to prevent "meltdowns" at crucial times of enrollment, animal validation or registration! Please work with the county Extension Office for any questions or problems you maybe experiencing with the system.
- NOT a database for counties/clubs/families to enter family members (i.e. siblings, grandparents, etc) that are not directly involved as a 4-H member or volunteer.

## DID YOU KNOW?

- Most questions can be answered by calling your county extension office. ([counties.agrilife.org/](http://counties.agrilife.org/))
- You are not a member or a volunteer of Texas 4-H until you have an ACTIVE status listed on your profile in 4-H CONNECT.
- 4-H members CANNOT register for an event/contest until the member profile is ACTIVE. If the county requires paper enrollment forms, that office has to enter enrollment information into the 4-H CONNECT system as well.
- Adult Volunteers are required to be screened through the Texas 4-H Youth Protection Standards program every three years.
- The Texas 4-H Program does not accept any personal checks for participation fees, animal validations or event registrations.
- A youth that is 8 years old and going into the 3rd grade must wait until September 1st to enroll for proper fees to be accessed in the system.

To help ensure your first time enrollment, or your re-enrollment, is as easy as possible, this document has been developed to lead you through the process. Please read and contact your county Extension Office if you have any questions prior to you beginning the enrollment process. ([counties.agrilife.org/](http://counties.agrilife.org/))



The members of Texas A&M AgriLife will provide equal opportunities in programs and activities, education, and employment to all persons regardless of race, color, sex, religion, national origin, age, disability, genetic information, veteran status, sexual orientation or gender identity and will strive to achieve full and equal employment opportunity throughout Texas A&M AgriLife.



# 4HCONNECT INSTRUCTIONS

1. Access the 4-H CONNECT on-line system at: <https://texas.4honline.com/>
2. **New Members:** Select [I need to set up a profile].  
**Returning Members:** Select [I have a profile] or [I forgot my password].  
*Contact County Extension Office for resetting assistance.*
3. **New Members:** Select Adult or Youth from the drop down menu and click [Add Member].  
**Returning Members:** Click [Edit] to the right of the inactive member's profile.
4. Once all profile information is current and correct under the Personal Information, Additional Information, Health Form, and Participation areas of enrollment continue to the Invoice page.
5. Review your invoice to ensure that the participation fee has been charged and it is correct. If you have been awarded an award certificate or a scholarship to cover your participation fee, enter the award code in the award code box. Once information has been reviewed, click continue to the Payment screen.
6. **New Members:** If you are new to 4-H, you can add your credit card payment information to 4-H CONNECT and it will be securely stored. Click the orange [Add New Credit Card] link if paying with credit card or select the county club check option.  
**Returning Members:** If the credit card on file has been updated you will need to remove it and add the credit card again using the new information.
7. Select the appropriate method of payment by clicking on the correct button, then click [Select Payment Method.].
8. On the "Confirm page" each person will be required to click the [Pay By Computer Terms and Conditions]. Click [Submit Enrollment]
9. Once an enrollment (new member) or re-enrollment (returning member) has been submitted, it is sent to the county office for review and approval. Once approved and paid for, an email confirmation will be sent to the family email address. Payment by 4-H Check can take up to 2 weeks to process. An active membership status **WILL NOT** be granted until participation fees have been received and marked as paid.

4HConnect Instruction pages can be found online at <http://texas4-h.tamu.edu/connect>

## NEW MEMBERS



- Set up **only one (1) FAMILY profile household on 4-H CONNECT.**
- Write down and place in a secure location the email address and password for the account. Contact the local County Extension Office for assistance in resetting the account.
  - Add individual youth and adult profiles (members) in your family profile. Adult/Youth and family profiles must be entered for an enrollment to be reviewed and accepted.

## RETURNING MEMBERS

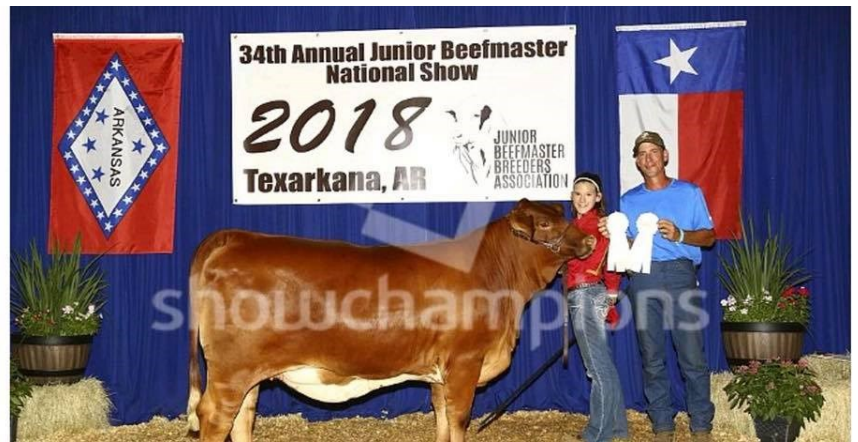


- **DO NOT** establish another family or member profile on 4-H CONNECT if you already have one in the system.
- Contact the local County Extension Office for assistance with the email or password if forgotten.
- When you access your profile to re-enroll **REVIEW YOUR PROFILE VERY CAREFULLY.** Incorrect information can create problems for you, your family, and the Extension Office when trying to communicate, accessing appropriate fees, acquiring school absences, etc.

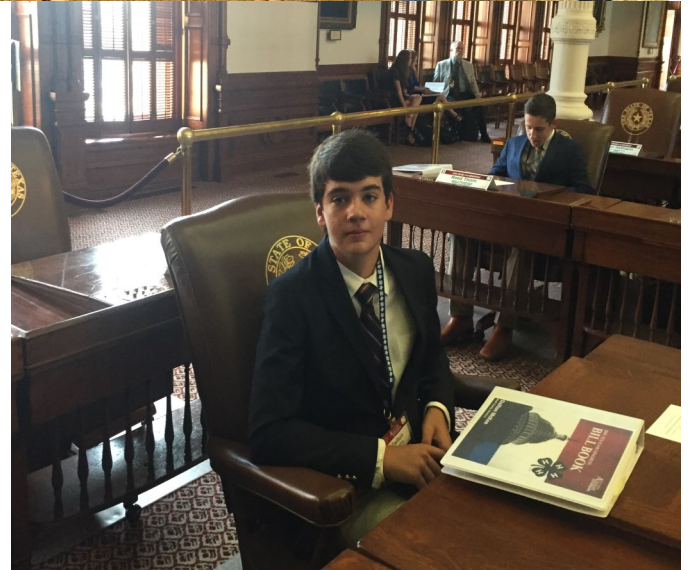


## Some Summer Events ...

Hannah Pace  
Jr Beefmaster National Show



Sarah Beth Brittain Texas 4-H Congress



Dalton McKee Texas 4-H Congress



Rusk County Family & Community Health Fair, Fruit/Vegetable Show  
Back (L-R) Taylor Rutherford, Amelie White, Kendra White, Ryan White, Everly White.  
Front (L-R) Andrew White, Kaylee White, Macey Rutherford, Kara McKee, Hadley White  
and Aubrey Ellis



Ashleigh Sugg, State Reordbook  
(Sheep Category) 5th Place





Jr. Angus State Show  
Sarah Beth Brittain



Ella Pirtle  
Aubrey Ellis  
Goat Camp



Jr. Nationals  
Aubrey Ellis



National Brahman Show  
McKenzie Brightwell



TJSSA  
Jess & Jarrett Pool



## Hunter Safety Course

A.J. Cook - Instructor

# Aim For Safety



**August 25, 2018**

**Rusk County Extension Meeting Room**  
115 East Fordall Street  
(between N.Main and N.Marshall)  
Henderson, TX 75652

The class is open to everyone, but anyone born on or after September 2, 1971, must successfully complete a Hunter Education Training Course first.

Cost is **\$15 per person.**

Minimum age of certification is 9 years.

The class will start at 8 a.m. and will run until complete (approximately 5 p.m.) with an hour break for lunch. Lunch is on your own.

For more information or to sign up call A. J. Cook at 903-595-4567



*United Way of Rusk County is an annual sponsor of Rusk County 4-H.*



For more information call:

**Archery - AJ Cook**

903-539-1505

**Shotgun - Jimmy Arp**

903-452-4524

## East Texas State Fair – Creative Arts



Consider entering a project in the Creative Arts Competition of the East Texas State Fair in Tyler this year.

The catalog is online and there are many categories to choose from for both youth and adult exhibitors. Make it a family event!

Go to [www.etstatefair.com](http://www.etstatefair.com) and then go to “Creative Arts” for more information.

Pre-registration is thru September 3rd. Read more online for the details.

This fair is close to home and is a lot of fun. If your entry gets placed then it could be on display throughout the fair which runs September 21– 30.



*Taste of  
Rusk County*

**September 18th**

I would like volunteers to help promote 4-H at Taste of Rusk County. You will receive a ticket to eat at the event and it is a great community service opportunity. Please call the Extension Office for more information or to sign up.

**5:30-7:30 p.m.-signup for hour long time slots**





## 2018 Creative Arts Contest Dates and Deadlines

**Register** through September 3, 2018 in the **Items** section on the Creative Arts page at [www.etstatefair.com](http://www.etstatefair.com) (Preferred) or bring entries and register on one of the Check-in Days.

### **Entry Check-in in Building A:**

- September 6 (3:30 - 6:00 p.m.) Exhibitors with many entries please arrive one hour before closing.
- September 8 (9:00 a.m. – 1:00 p.m.). Exhibitors with many entries please arrive one hour before closing.
- You may schedule a time to drop off your entry (before September 5) by emailing [eingram@etstatefair.com](mailto:eingram@etstatefair.com) or by calling (903) 597-2501. Limited times available.

### **Entry Release:** Bring claim ticket to Building A on the Fairgrounds

- October 1 from **1:00 to 6:00** p.m.  
OR
- October 2 from 9:30 a.m. to 4:30 p.m.

### **Premiums:**

Premiums are paid to all Youth & Special Populations winners (ages 3+), TriiColors, & Premier Exhibitors in the ETSF Office.

- Monday - Friday, September 24 - 28 from 10:00 a.m. to 1:00 p.m. (During the Fair)
- Monday, October 1, **1:00 - 4:30 p.m**
- Tuesday, October 2, **9:30 a.m - 4:30 p.m.**

**No premiums will be paid after Wednesday, October 3.**

See the Creative Arts Catalog on the Creative Arts page for all Creative Arts information.



## Can I Enter This . . . ?

### East Texas State Fair Creative Arts Contest



Item	Division
Afghans	Divisions Q, S, & U
American Indian Crafts	Divisions F, M, & V
Antiques (items 50 years or older)	Division N – Antiques
Antique Wedding Dresses or accessories	Division N – Antiques
Appliqué	Divisions C, H, & I
Calligraphy	Art Divisions – G, P & V
Canned peaches, pickles or other canned food item	Division A – Canned Foods
Cards, handmade	Divisions F, M, & V
Ceramics	Divisions F, M, & V
Collections of rocks, stamps, teapots, belt buckles, etc.	Divisions J & L
Dioramas	Divisions F & V
Doll Clothing	Division R – Dolls
Duct Tape garments or accessories	Division X – Clothing
Family Tree, Crest, etc.	Division O
Furniture	Divisions F, M, & V
Handmade Wedding Dresses	Division X – Clothing
Holiday decorations – Christmas, Easter, other	Division C – Christmas & Holiday Corner
Jewelry	Divisions F, M, & V
Leather Work	Divisions F, M, & V
Metal Detector Finds	Division O
Metal Work	Divisions F, M, & V
Pet Accessories	Division F, M, & V
Pet Clothing	Division X
Pottery	Divisions F, M, & V
Recycled Items	Divisions F, M, & V
Scrapbooks or pages	Divisions F, M, O, & V
Sculpture	Divisions F, M, & V
Smocking	Divisions C & U
Tole painting	Division P – Adult Art
Wreaths and Floral Decorations	Divisions C & I

**Most Divisions have miscellaneous classes if you are not finding the specific item. Give us a call or bring the item to enter and we will try to find a spot for it.**







**All entries are due to the Extension Office on or before  
September 25th**

\* Rabbit Validation — Hallsville High School, 4-7pm,  
September 24. See the website for the validation form

[http://www.harvestfestivallivestockshow.com/  
livestockrules.html](http://www.harvestfestivallivestockshow.com/livestockrules.html)

Harvest Festival

Home Economics Contest

Opportunities

Consider entering a project in the Harvest Festival Home Economics Contest. There are multiple divisions in which to enter and a 4-H'er may enter multiple divisions.

"The Harvest Festival Home Economics Contest is held every year during Harvest Festival to allow youth the opportunity to show off their ability to grow, sew, paint, photograph, build, bake, make, create, and decorate!"

#### **Divisions are:**

#### **Berries**

Each entry must contain berries and it must be listed on the recipe. Entries must NOT require refrigeration.

#### **Fine Arts**

Any original painting/drawing

#### **Handcrafts**

Fiber arts	Hand stitchery	Rug Making
Weaving	Kitchen	Ceramics/Pottery
Miscellaneous	Woodworking	Wall Hangings
Wreaths/Door Decorations		Table Decorations
Wearable Art/Clothing		Handcraft

#### **Photography**

Can be black & white or color; should be mounted or framed. Photos must be 5X7 or 8X10

#### **Poetry**

Typed or handwritten on 8.5 x 11 paper

#### **Pumpkin Carving Contest**

Decorate, carve, paint or dress up a pumpkin.



Entries will be judged according to the following criteria:

Original  
Creative  
Creative Painting  
Funny  
Patriotic  
Small/Large

#### **Salsa Contest**

Tomato Based      Fruit-Based Salsa  
Non-Tomato Based (Vegetable Salsa)

#### **Clover Kids-Poster Contest-K- 2nd Grade**

Harvest Festival

Note: For a complete list of rules please contact the Rusk County Extension Office or see the Harvest Festival website: [harvestfestivallivestockshow.com/](http://harvestfestivallivestockshow.com/)

#### **Entry Fees:**

\$10.00 per entry	Photography-\$2.00
Fine Arts-\$2.00	Salsa Contest-\$3.00
Poetry-\$2.00	Clover Kid Posters-\$1.00
Pumpkin Carving-\$2.00	

Note: All Home Economics entries will be pre-paid

All entry money will be due September 25th to the Rusk County Extension Office.

**September 25th** Entry form, recipe and money due to the Rusk County Extension Office

**October 24th**-Check in of entries at Maude Cobb Convention Center 4:00-8:00 p.m.

**October 25th**-Public Viewing 2:00 p.m.

-Check in/pick up of Home Economics entries  
3:00-6:00 p.m.



**October 24 - 27, 2018**

**Longview, Texas**

**Harvest Festival Home Economics Competition**

While you are off on summer vacation start thinking about things that you can enter in the Harvest Festival Home Economics Competition

this fall.

So, when you are taking photographs while on vacation take some good shots that will make good entries for competition. Or when you are baking, try some new recipes that might be good to enter this fall. Harvest Festival will be here before you know it!



**KPXI 100.7 FM** your source for local  
county extension reports every weekday



@ 8:00 a.m.

Monday - Grant Davis CEA-4-H

Tuesday - Jamie Sugg, CEA-Ag

Wednesday - Liz Buckner, CEA-FCH

Thursday - Jamie Sugg, CEA-Ag

Friday - Liz Buckner, CEA-FCH

<http://www.kwrdonline.com/>

*Until next time —*

*Grant Davis*

Grant Davis

County Extension Agent-4-H

Rusk County

*Liz Buckner*

Liz Buckner

County Extension Agent-FCH

Rusk County

*Jamie Sugg*

Jamie Sugg

County Extension Agent-Ag

Rusk County

